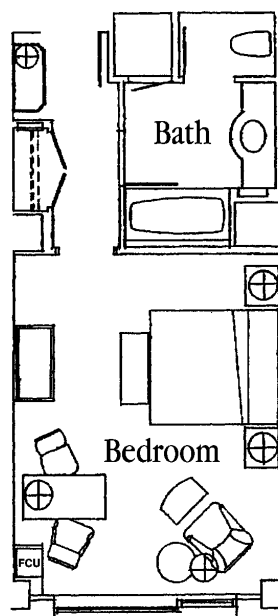




THE RITZ-CARLTON®  
NEW YORK, BATTERY PARK

# Deluxe Harbor View Room



All Deluxe Harbor View Rooms' décor are art-deco inspired spacious rooms (425 square foot). Each room consists of a king or two double bed, Frette linens, feather duvet and goosedown pillows, a working desk and two lovely chairs. These rooms have many luxurious amenities such as remote control TV and DVD player, CD player with alarm clock, multi-line phone with high speed internet access, separate marble shower stall and marble bath, upscale bath essentials and a bath scale. Additionally, rooms feature an in-room safe, mini-bar, as well as windows that partially open.

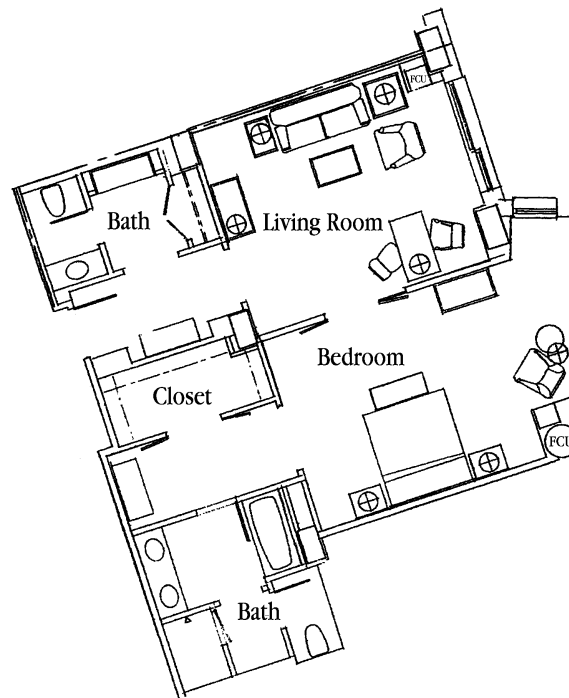
## Amenities

- Frette linens, feather beds, feather duvets and goose down pillows
- 100% cotton terry velour Bernard bathrobes, 600 gram bath sheets and linen facial towels
- Ritz-Carlton original pajamas in suites
- South African Zimbabwe black marble bathtubs with separate marble shower stall and WC
- Bath scales with terry cloth linen cover, Pro Style hairdryer
- Silk curtains
- In-room safe
- Working desk with two chairs
- Multi-line cordless telephones with voicemail and data line capabilities
- High speed internet access
- Refreshment cabinets stocked with premium beverages and snacks
- Digital thermostats for individual climate control
- 27" Phillips television
- ONKYO DVD home theater system with AM/FM radio and five stereo digital surround system
- "New York Originated" DVD library available for RC Club accommodations and suites
- Bose Wave CD/ Clock radios with a CD for enjoyment
- CD library available for RC Club accommodations and suites
- Contemporary interior designed by Frank Nicholson



THE RITZ-CARLTON®  
NEW YORK, BATTERY PARK

# Executive Suite



All Executive Suites' décor are art-deco inspired, equipped with two spacious rooms comprised of a king bedroom, living room, and bathroom (800 square foot). Some suites offer an additional guest powder room in the living room area. Each suite consists of a king bed, Frette linens, feather duvet and goosedown pillows, a working desk and two lovely chairs. These suites have many luxurious amenities such as remote control TV and DVD player, CD player with alarm clock, multi-line phone with high speed internet access, separate marble shower stall and marble bath, upscale bath essentials and a bath scale. Additionally, suites feature an in-room safe, mini-bar, as well as windows that partially open.

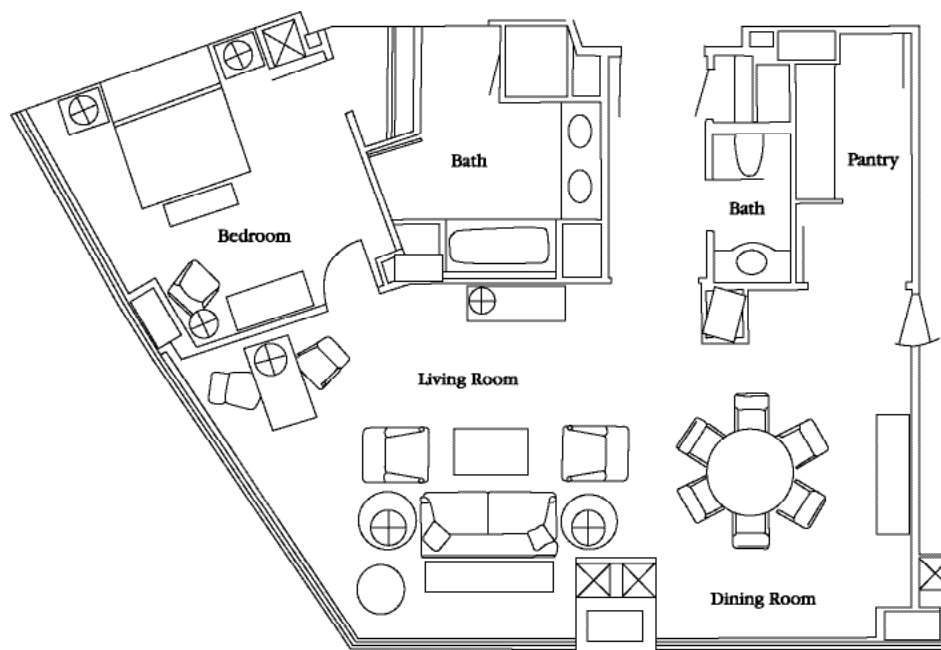
## Amenities

- Frette linens, feather beds, feather duvets and goose down pillows
- 100% cotton terry velour Bernard bathrobes, 600 gram bath sheets and linen facial towels
- Ritz-Carlton original pajamas in suites
- South African Zimbabwe black marble bathtubs with separate marble shower stall and WC
- Bath scales with terry cloth linen cover, Pro Style hairdryer
- Silk curtains
- In-room safe
- Working desk with two chairs
- Multi-line cordless telephones with voicemail and data line capabilities
- High speed internet access
- Refreshment cabinets stocked with premium beverages and snacks
- Digital thermostats for individual climate control
- 27" Phillips television
- ONKYO DVD home theater system with AM/FM radio and five stereo digital surround system
- "New York Originated" DVD library available for RC Club accommodations and suites
- Bose Wave CD/ Clock radios with a CD for enjoyment
- CD library available for RC Club accommodations and suites
- Contemporary interior designed by Frank Nicholson



THE RITZ-CARLTON®  
NEW YORK, BATTERY PARK

# Liberty Suite



These 1125 square foot grand accommodations feel more like a private apartment than a hotel room. Each of these 9 suites provide lavish views of New York Harbor, The Statue of Liberty, Ellis Island and Battery Park from every room. In addition to an elegant king bedroom, the living area includes a dining/meeting table with five lovely chairs. A small pantry with microwave oven, sink and refrigerator is located conveniently off the dining room. Liberty Suites can add an additional connecting bedroom (a Harbor View Double) for a two-bedroom suite.

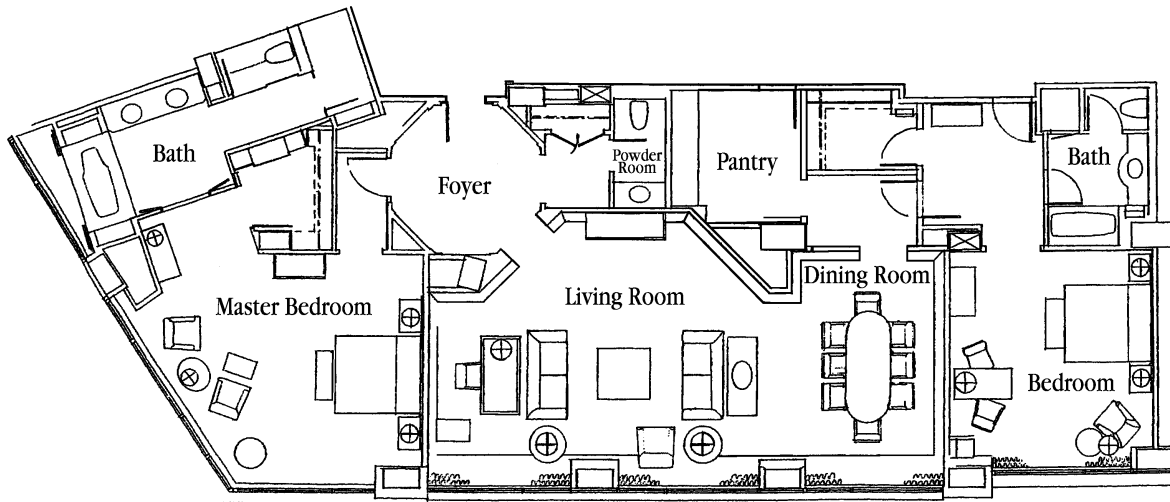
## Amenities

- Frette linens, feather beds, feather duvets and goose down pillows
- 100% cotton terry velour Bernard bathrobes, 600 gram bath sheets and linen facial towels
- Ritz-Carlton original pajamas in suites
- South African Zimbabwe black marble bathtubs with separate marble shower stall and WC
- Bath scales with terry cloth linen cover, Pro Style hairdryer
- Silk curtains
- In-room safe
- Working desk with two chairs
- Multi-line cordless telephones with voicemail and data line capabilities
- High speed internet access
- Refreshment cabinets stocked with premium beverages and snacks
- Digital thermostats for individual climate control
- 27" Phillips television
- ONKYO DVD home theater system with AM/FM radio and five stereo digital surround system
- "New York Originated" DVD library available for RC Club accommodations and suites
- BANG & OLUFSEN BeoSound Century CD, Tape and FM radio.
- CD library available for RC Club accommodations and suites
- Contemporary interior designed by Frank Nicholson



THE RITZ-CARLTON®  
NEW YORK, BATTERY PARK

# The Ritz-Carlton Suite



The Ritz-Carlton Suite is located on the 12th floor, overlooking New York Harbor, the Statue of Liberty and Ellis Island. This art deco inspired 2000 square foot suite offers one bedroom (with option of adding a connecting bedroom - 2500 sq ft), and spacious living and dining areas. Relax with spectacular panoramic views in a deep-soaking jacuzzi tub with a selection of aromatherapy amenities. Breathtaking views from all rooms.

## Amenities

- Frette linens, feather beds, feather duvets and goose down pillows
- 100% cotton terry velour Bernard bathrobes, 600 gram bath sheets and linen facial towels
- Ritz-Carlton original pajamas in suites
- South African Zimbabwe black marble bathtubs with separate marble shower stall and WC
- Bath scales with terry cloth linen cover, Pro Style hairdryer
- Silk curtains
- In-room safe
- Working desk with two chairs
- Multi-line cordless telephones with voicemail and data line capabilities
- High speed internet access
- Refreshment cabinets stocked with premium beverages and snacks
- Digital thermostats for individual climate control
- BANG & OLUFSEN 32" Flat screen televisions, AM/FM radio & 6-disc multi-CD player, Dolby Digital DVD player and tower loudspeakers in the parlor and master bedroom
- BANG & OLUFSEN digital telephone system throughout the suite
- "New York Originated" DVD library available for RC Club accommodations and suites
- CD library available for RC Club accommodations and suites
- Contemporary interior designed by Frank Nicholson